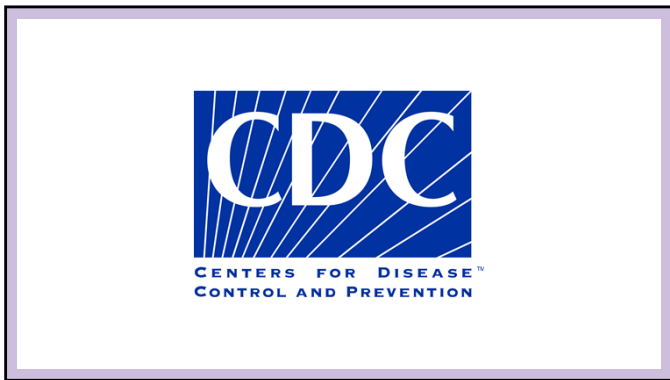
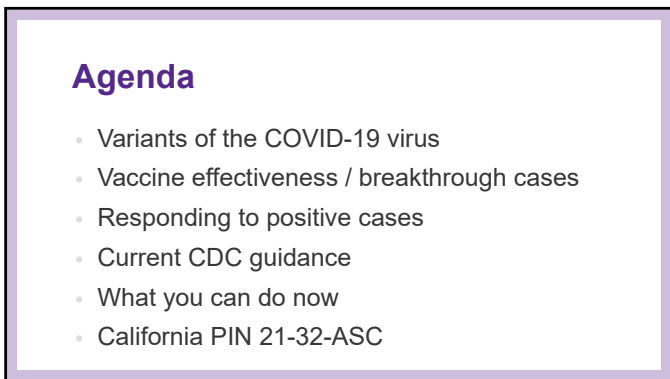




1



2



3

COVID Variants

4

COVID Variants

- Viruses constantly change through mutation
- Some variations spread more easily



5

Variants in the United States

Variant	First Detected	Detected in US
Alpha	United Kingdom	December 2020
Beta	South Africa	December 2020
Gamma	Brazil/Japan	January 2021
Delta	India	March 2021

6

Vaccine Effectiveness

7

Vaccine Effectiveness

- The vaccines work!
- Vaccine breakthrough cases are expected
- No vaccine is 100% effective
- Primary purpose is preventing hospitalizations/death

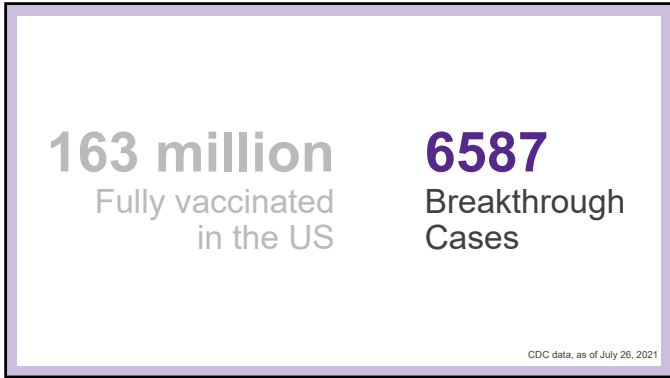
CDC data, as of July 26, 2021

8

163 million Fully vaccinated in the US	6587 Breakthrough Cases
---	--------------------------------------

CDC data, as of July 26, 2021

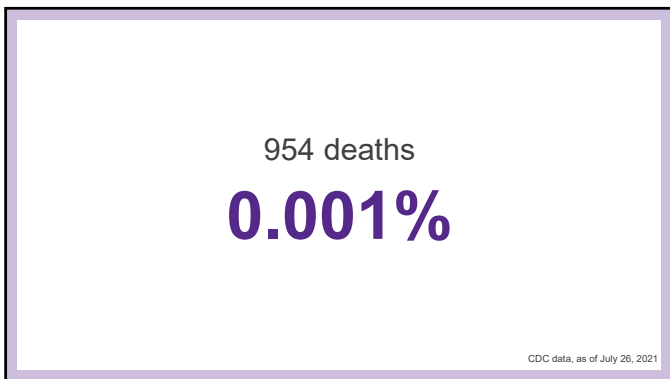
9



10



11



12

Vaccines are Effective

- Breakthrough cases in only a small percentage of vaccinated people
- No unexpected patterns have been identified in the case demographics or vaccine characteristics
- **Everyone 12 years of age and older get vaccinated!**
- CDC: fully vaccinated can resume activities that they did prior to the pandemic

13

Responding to Positive Cases

14

Responding to Positive Cases

- Basic protocols remain in place
- Isolate for 10 days
- Full PPE if a positive resident is in the community (N95, eye protection, gown, gloves)
- Test close contacts based on state/county guidance

15

Visitors

- Essential visits never stop (compassionate care, home health, PT, etc.)
- Visits should continue unless in outbreak status
- Visitors must comply with protocols (screening, masks, etc.)

16

Exposure - Staff

Vaccinated	Unvaccinated
Can continue working Test if "higher risk" exposure	Quarantine for 14 days Can return sooner with negative test(s)

17

Exposure - Residents

Vaccinated	Unvaccinated
Quarantine Full PPE Can remove from quarantine with test, consult with HD	Quarantine Full PPE Can remove from quarantine with test, consult with HD

18

Exposure Definition

- Within 6 feet
- For 15 minutes or more
- During a 24 hour period
- Without PPE

19

Mask Recommendations

20

CDC Mask Recommendations

Staff

- Surgical/medical masks
- At all times while working
- May remove in meetings if all are vaccinated

21

CDC Mask Recommendations

Residents

- Cloth face covering
- May remove while eating in dining room
- May remove in activities if all are vaccinated

22

CDC Mask Recommendations

Visitors

- Cloth face covering
- Wear when in common areas
- May remove while visiting resident if all are vaccinated

23

Mask Recommendations

Independent Living

- Follow recommendations of your state/county
- CDC recommends masks for fully vaccinated indoors in areas with “substantial” or “high” transmission
- <https://covid.cdc.gov/covid-data-tracker/#county-view>

24

What You Can Do Now

25

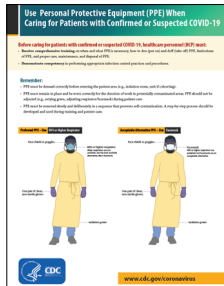
PPE Supplies

- Ensure sufficient supplies on hand
- N95 respirators
- Eye protection

26

Education

- Re-educate staff on COVID basics
- Educate new staff
- Mask requirements
- PPE Donning/removal procedures



27

Communication

- State licensing agencies
- Health department
- Staff
- Families

28

Vaccine Access

- Assist/encourage residents and staff to access vaccines
- Transportation
- Schedule vaccine clinics with your pharmacy

29

COVID-19

Delta Variant Update



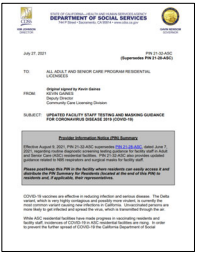
30

California PIN 21-32-ASC

31

PIN 21-32-ASC

- Issued July 27
- Effective August 9
- Full compliance August 23

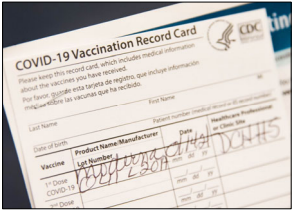


The screenshot shows a letter from the Department of Social Services, dated July 27, 2021. It is addressed to all Adult and Senior Care Program Residential Facilities. The subject is 'COVID-19 Vaccination Status and Reporting Requirements for Residential Care Facilities'. The letter states that all residents and staff must be vaccinated against COVID-19 by August 9, 2021, and that facilities must report vaccination status to the Department by August 23, 2021. It also mentions that unvaccinated individuals may be subject to isolation and other measures to reduce transmission.

32

Proof of Vaccination Status

- Must track vaccine status of staff
- Must document verification



The screenshot shows a 'COVID-19 Vaccination Record Card' from the CDC. It includes fields for Last Name, First Name, Patient Number, and Health Care Provider Name. The 'Vaccine' section has columns for 'Vaccine', 'Lot Number', 'Date', and 'Health Care Provider'. There are handwritten entries in the 'Vaccine' and 'Date' columns, including 'Pfizer' and '8/3/2021'. The card also has a section for '1st Dose COVID-19' and '2nd Dose' with checkboxes for 'Yes' and 'No'.

33

Screening Testing

- Unvaccinated must be tested **weekly**
- PCR or antigen tests accepted
- Document

34

COVID-19 California Update



35